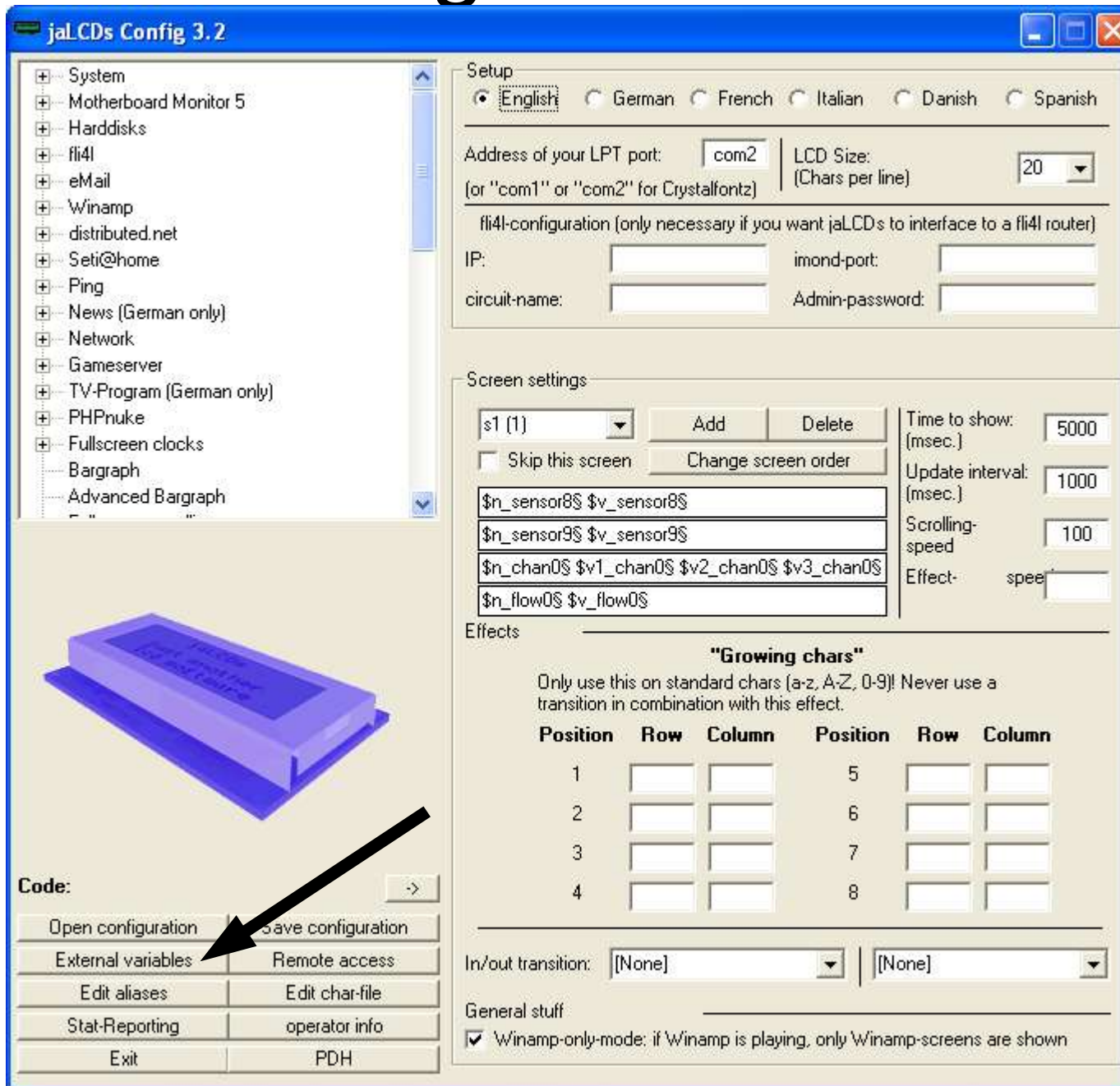
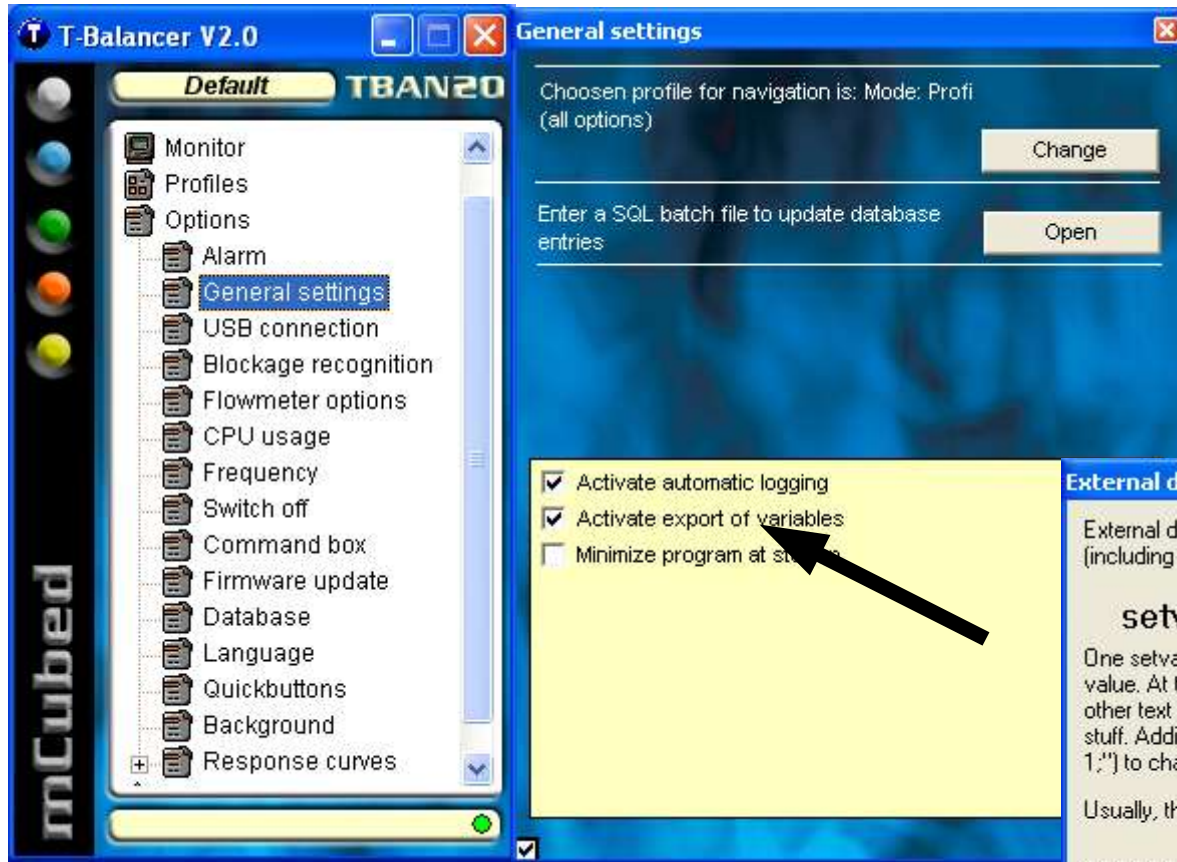


Connecting JaLCD

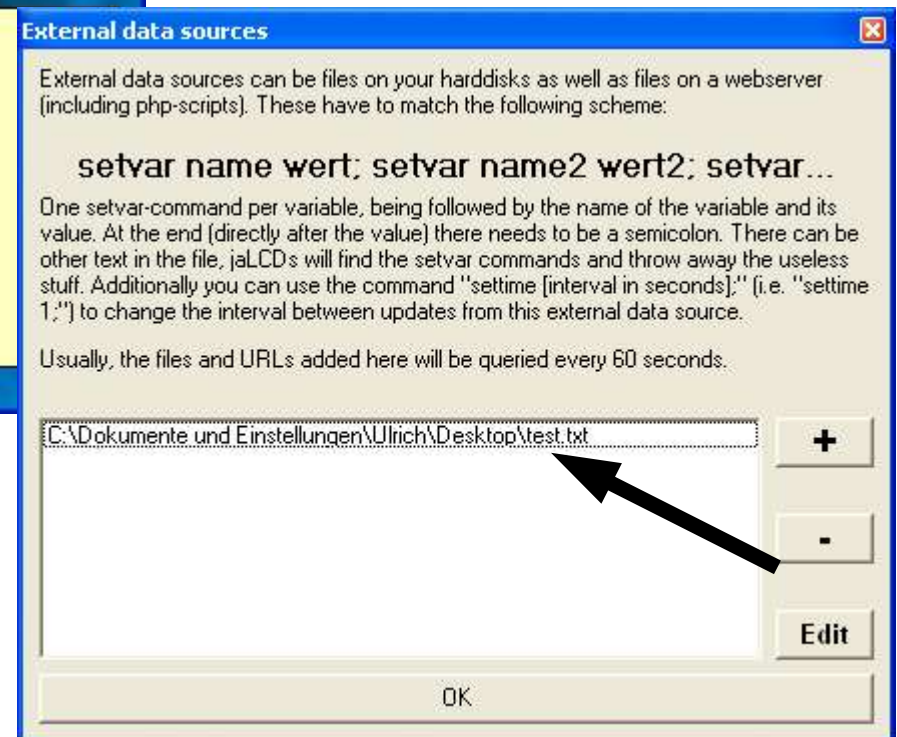


- ✓ Download JaLCD from the web www.jalcd.de
- ✓ Install the software and driver
- ✓ Choose your LCD
- ✓ Activate <External variables>

Connecting JaLCD



- ✓ Activate in the T-Balancer <general setting> the export of variables
- ✓ Choose in JaLCD as an import the export file of the T-Balancer



Connecting JaLCD

```
preview
SensorA0 32,0 C
SensorA1 29,0 C
FanVGA 36% 639rpm
Flow1 1,5l/min
```

```
preview
SensorA0 32,0 C
SensorA1 29,0 C
A 36% 639rpm 7,2V
Flow1 1,5l/min
```

```
preview
SensorA0 32,0 C
SensorA1 29,0 C
6% 639rpm 7,2V
Flow1 1,5l/min
```

```
preview
SensorA0 32,0 C
SensorA1 29,5 C
m 7,2V FanVGA
Flow1 1,5l/min
```

- ✓ Customize your Display