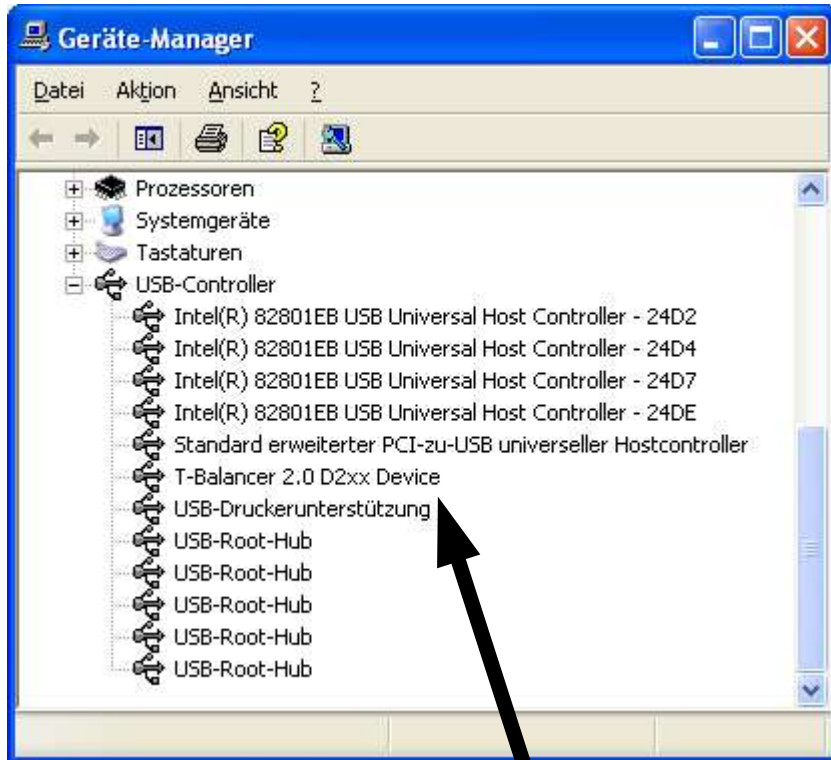
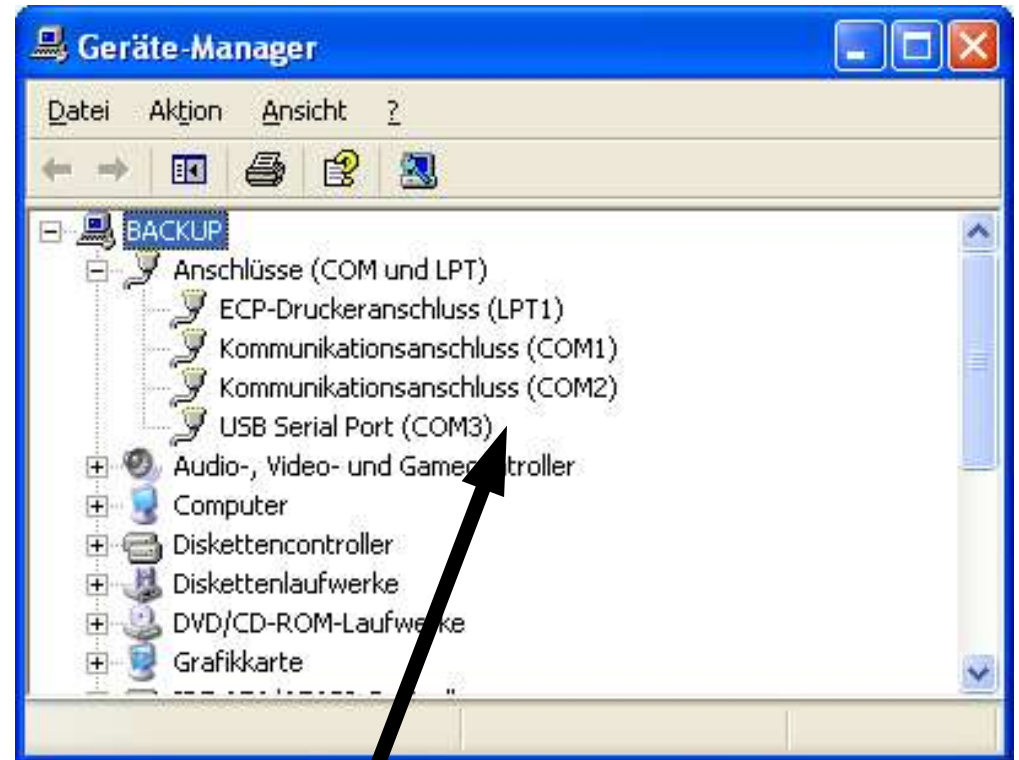


# Which driver is installed?

## Changing USB drivers



✓ API driver is installed

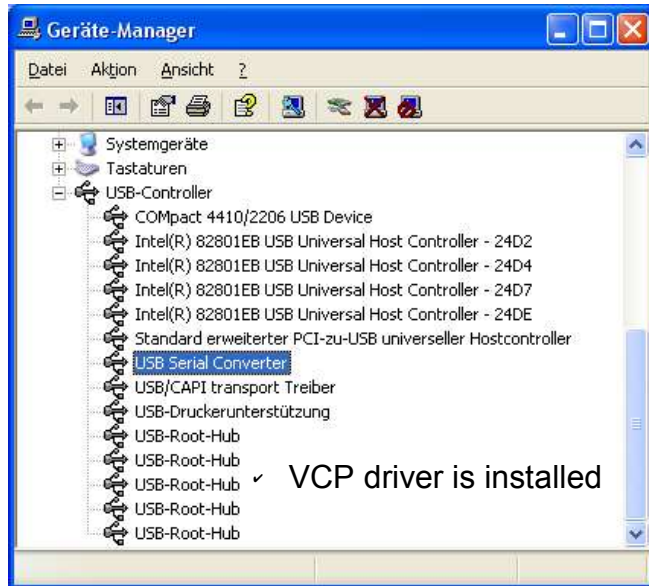


✓ VCP driver is installed

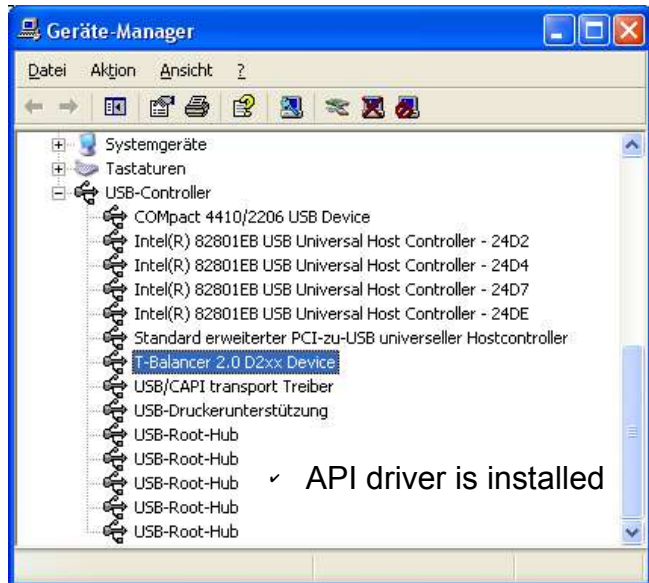
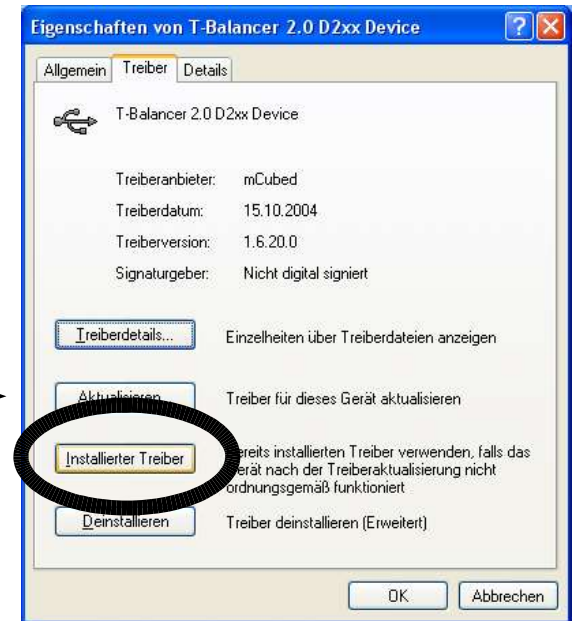
# Easy switch!

## Changing USB drivers

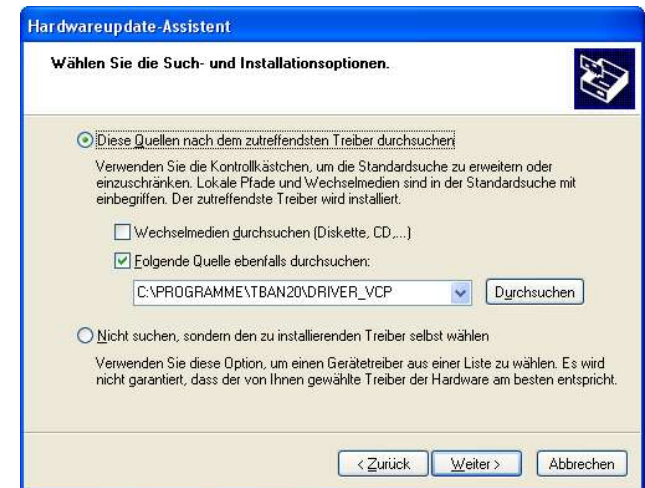
If easy switching does not work in your system, then follow the instructions on the next pages ->



Choose **<properties>** with the right mouse button and choose **<installed driver>**

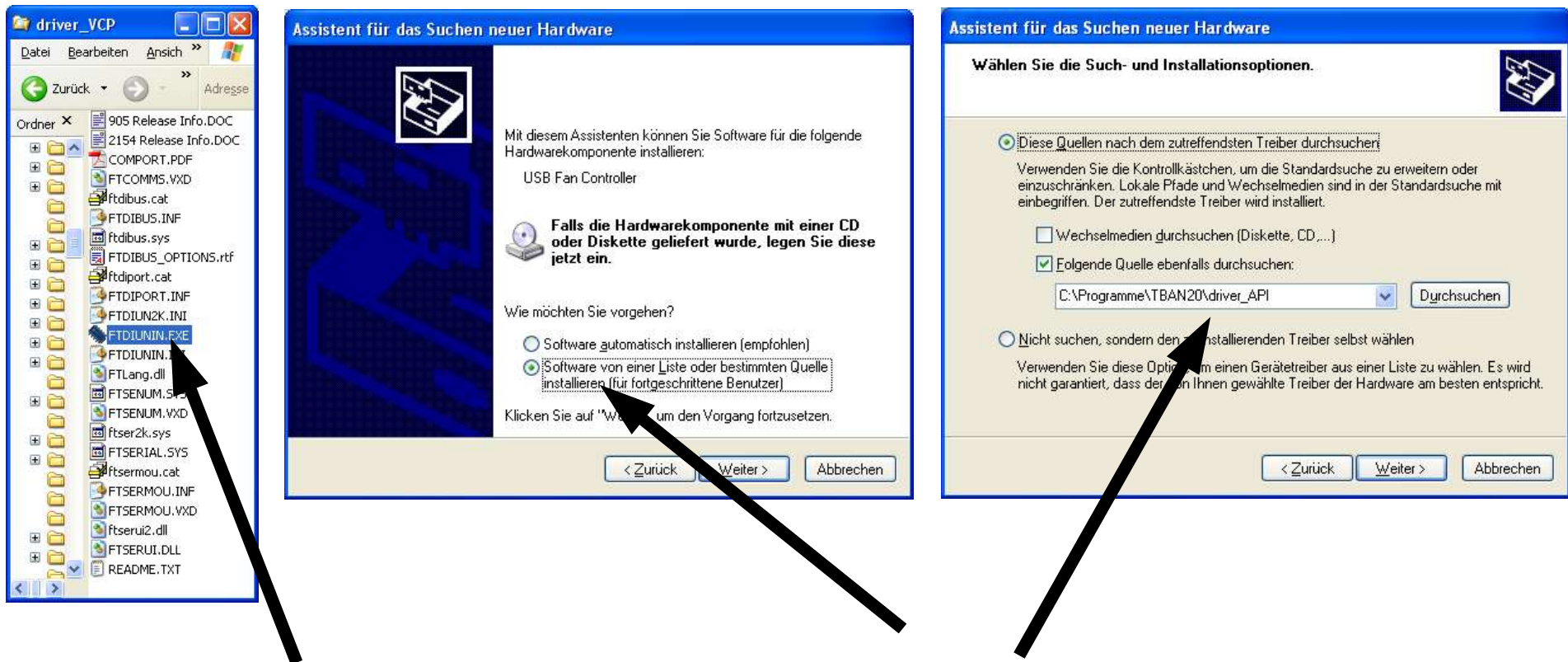


Choose **<actualise driver>** with the right mouse button



# From VCP to API

## Changing USB drivers

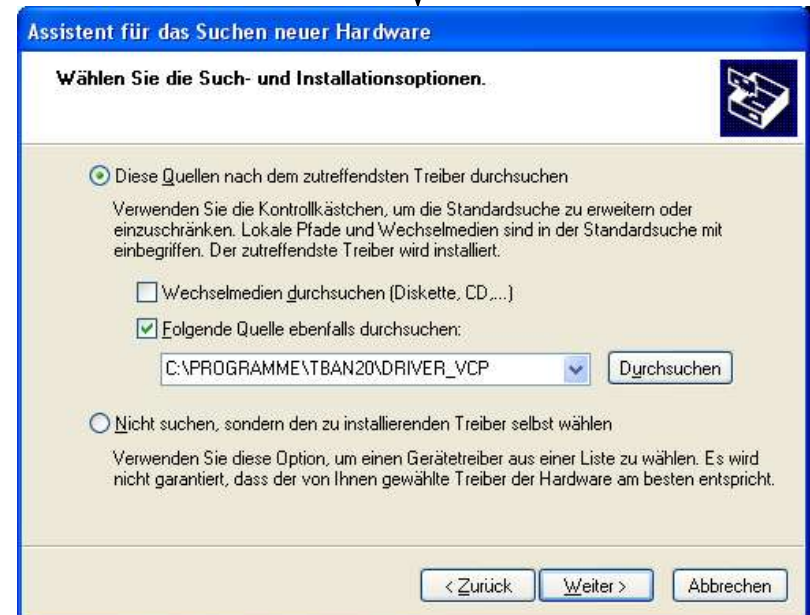
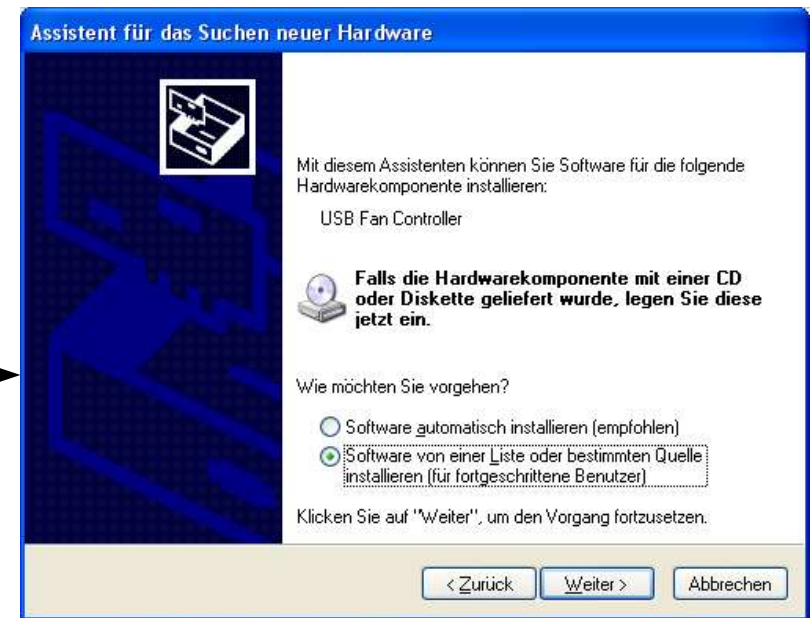
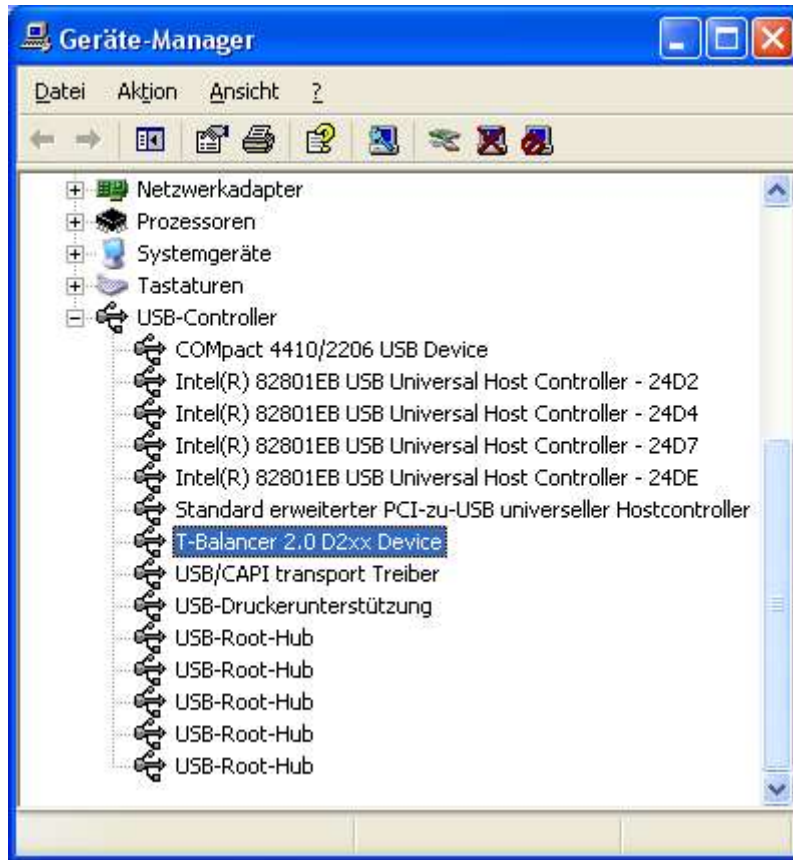


- ✓ Deinstall the VCP driver with:  
C:\Program files\TBAN20\driver\_vcp\  
**ftdiunin.exe**
- ✓ Unplug the USB cable from the T-Balancer

- ✓ Replug the USB cable
- ✓ Install the API driver from the target folder:  
C:\Program files\TBAN20\driver\_API

# From API to VCP

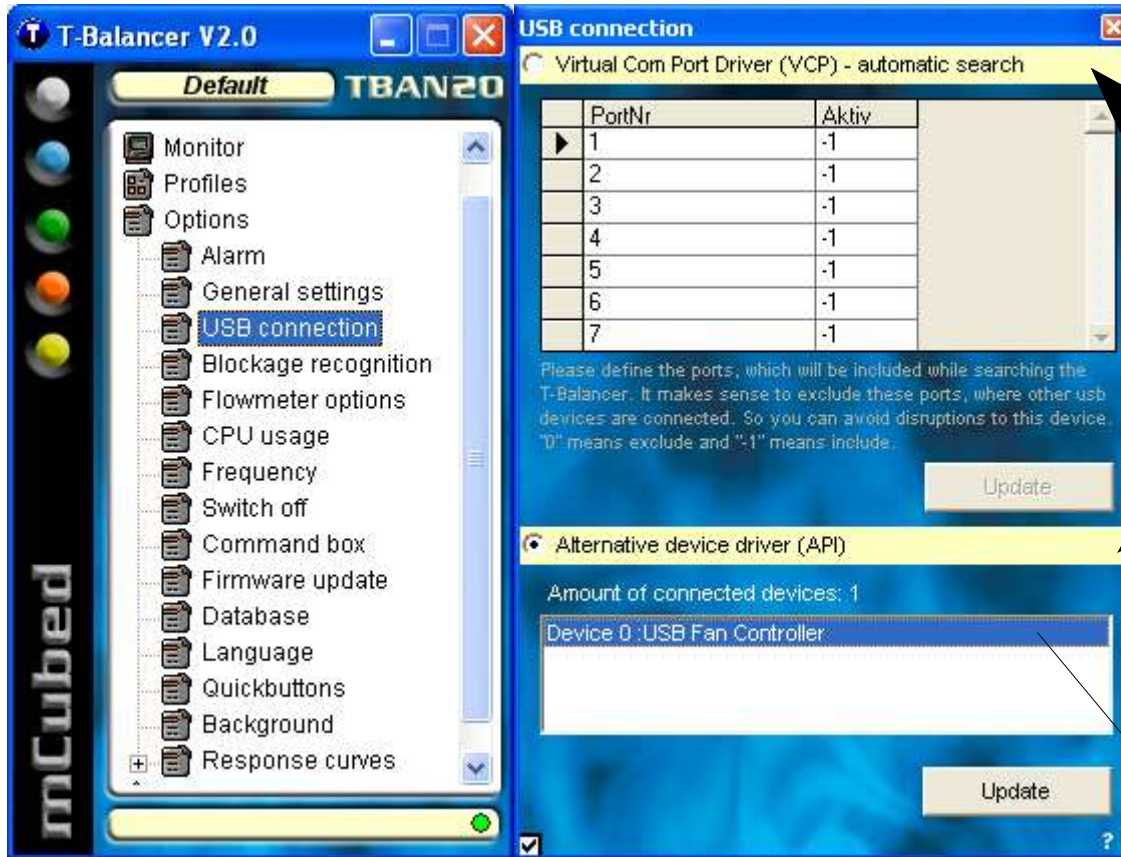
## Changing USB drivers



- ✓ Deinstall the API driver with the right mouse button
- ✓ Unplug and replug the USB cable from the T-Balancer
- ✓ Install the VCP driver from the target folder:  
C:\Program files\TBAN20\driver\_VCP

# Update driver in software

## Changing USB drivers



- ✓ Choose the Option->USB connection and choose either API or VCP driver
- ✓ Confirm with <update>

- ✓ Restart the program, USB connection is working, green LED is blinking

**Hint:** you really have to click on the <Device 0> to activate it

The API driver is recommend for daily use. It is more stable. But for a firmware update the VCP driver is needed.